

SECTION 17, T.6N., R.2E., S.L.B. & M.  
IN WEBER COUNTY  
SCALE 1" = 400'

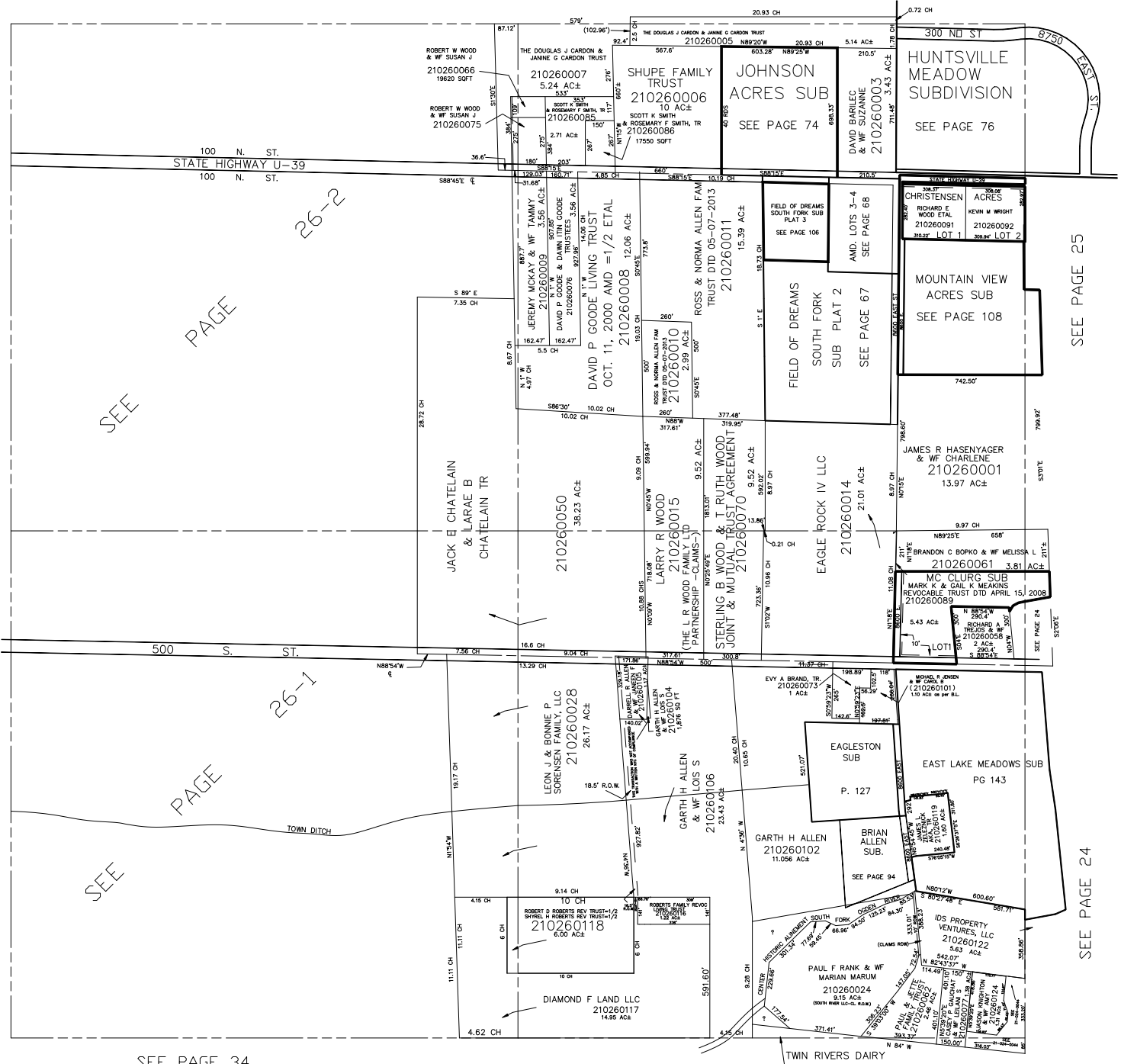
TAXING UNIT: 520

SEE PAGE 10

SEE BOOK 24, P. 20

SEE BOOK 24, P. 19

SEE BOOK 24, P. 18



SEE PAGE

PAGE 26-2

SEE PAGE

SEE PAGE 34

SEE PAGE 33

\* ADDRESS AFFIDAVIT E#2806538 & E#2964999 & E#3015053

SEE PAGE 25

SEE PAGE 24